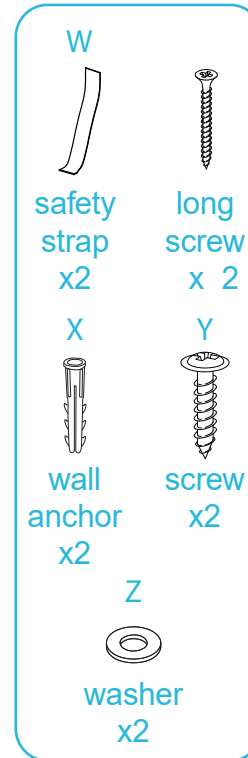
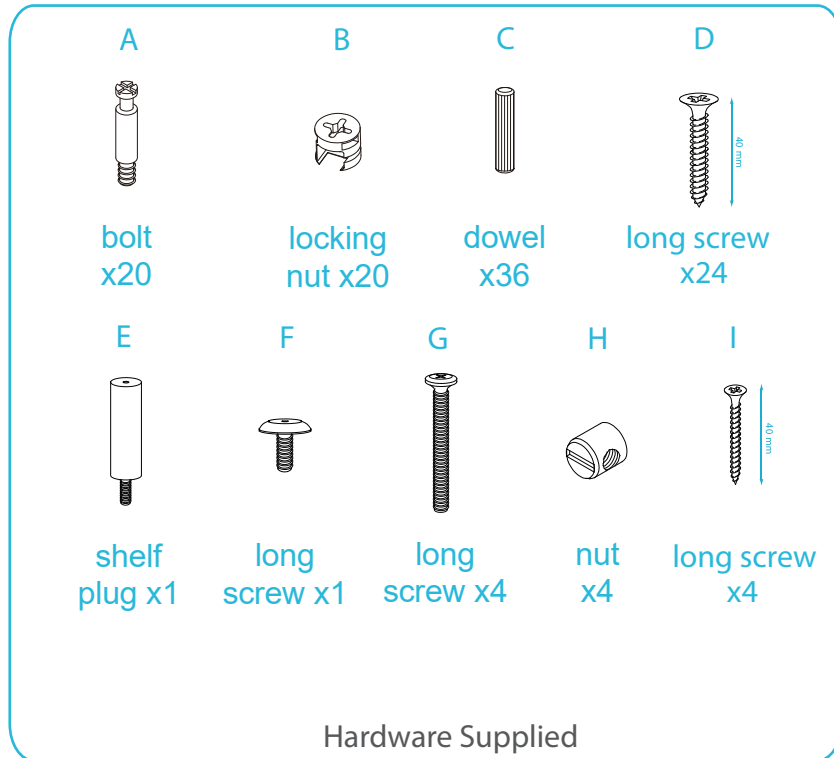


# Watson 8 Cube Storage Unit

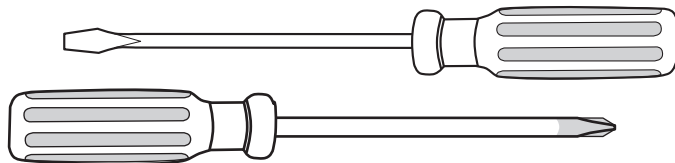
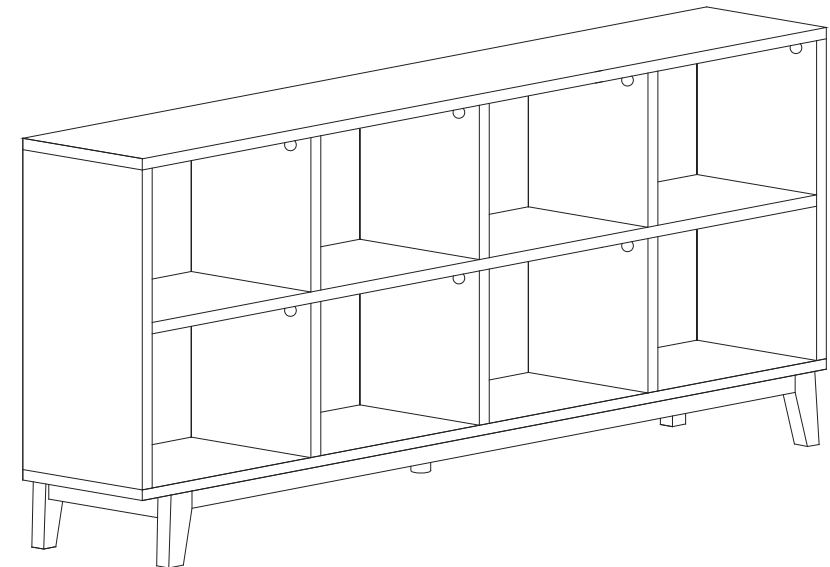
## Assembly Instructions

Thank you for your purchase.  
Please follow the instructions below for correct assembly.

# mocka



**WARNING:** Any furniture that is not anchored to a wall has the potential to tip over in certain circumstances, i.e. if a child attempts to climb up on the furniture or in the event of an earthquake. Accordingly, we recommend that all furniture is anchored to a wall. We supply a free safety wall anchor with all furniture sold and we recommend these are used to prevent your product tipping. The fixing device provided should fit most wall types, but please note that different wall materials may require different fixing devices from those supplied.



Phillips & Flathead screwdrivers and hammer required  
For quicker assembly, we recommend the use of a power drill on a low-speed setting.

\*We recommend using a Flathead screwdriver to tighten all locking nuts 100% before first use.  
Please clear any loose wood from the locking nut holes before inserting the nut to ensure it locks 100%.

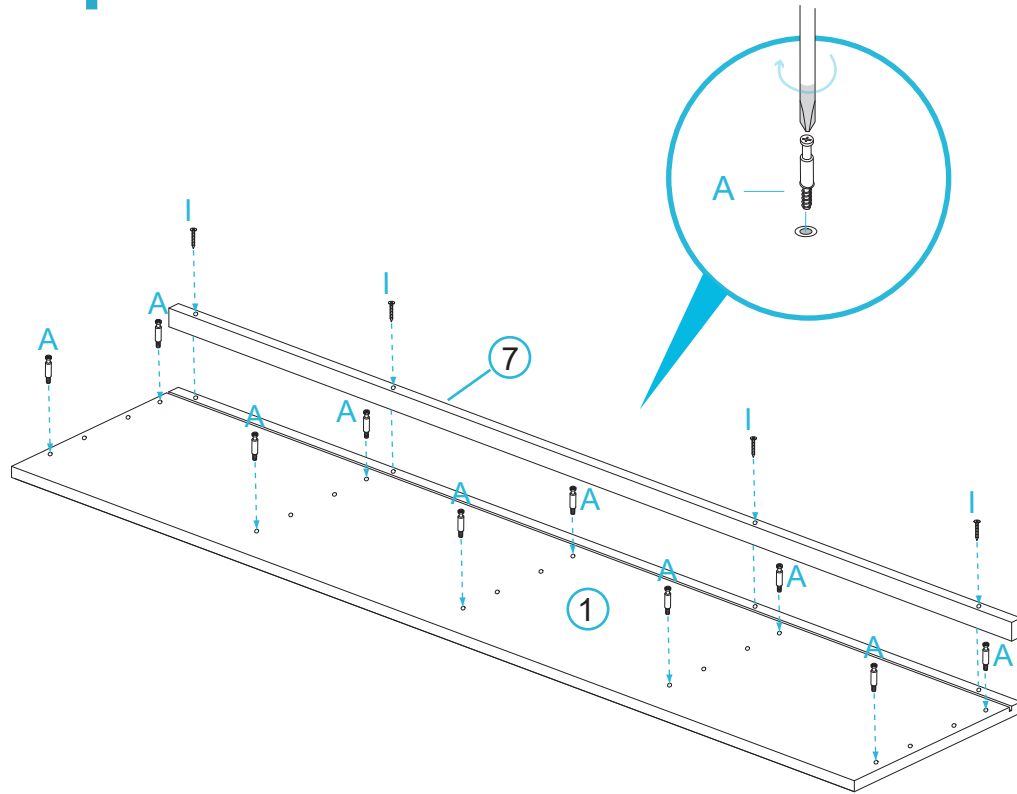
# Watson 8 Cube Storage Unit

## Assembly Instructions

mocka

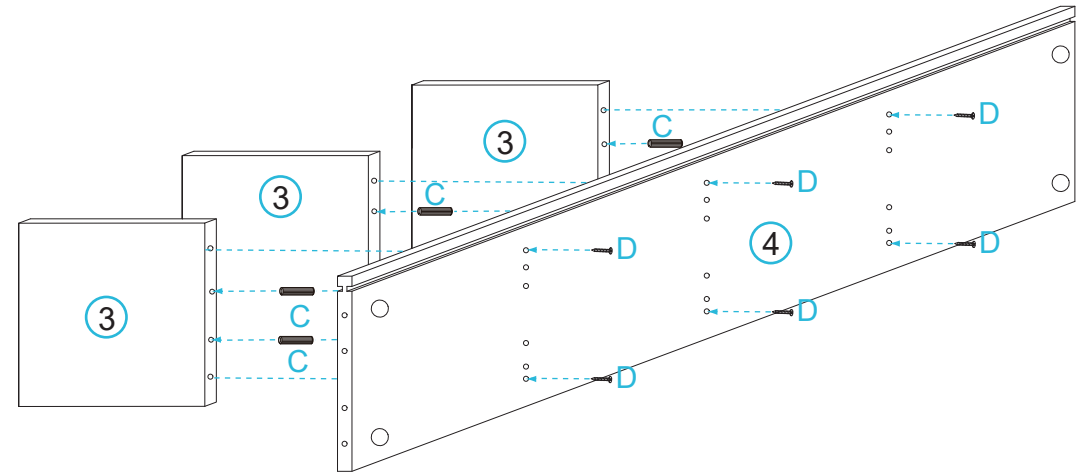
Thank you for your purchase.  
Please follow the instructions below for correct assembly.

1



Insert 10 x bolts (A) into panel [1]. Attach panel [7] into panel [1] and secure with 4 x long screws (I). Tighten with a screwdriver.

2



Attach panel [3] into panel [4] and secure with 6 x long screws (D) 6 x dowel (C). Tighten with a screwdriver.

# Watson 8 Cube Storage Unit

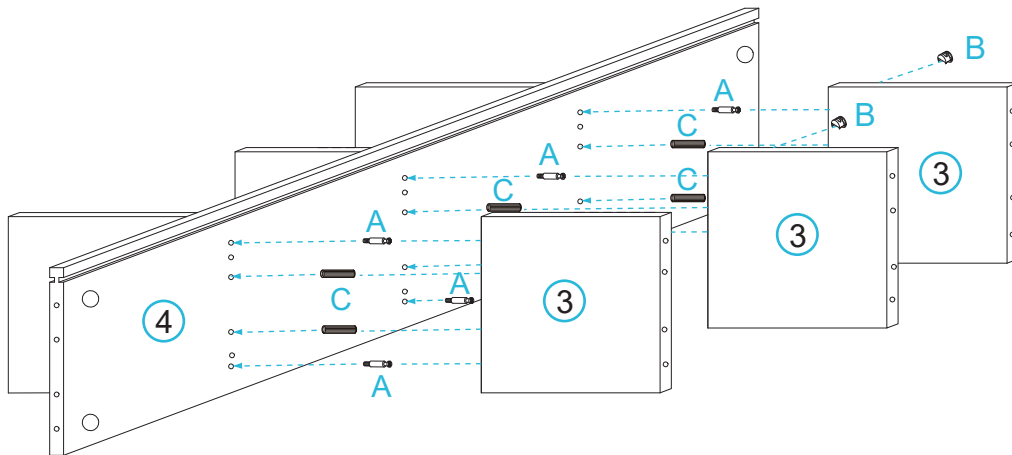
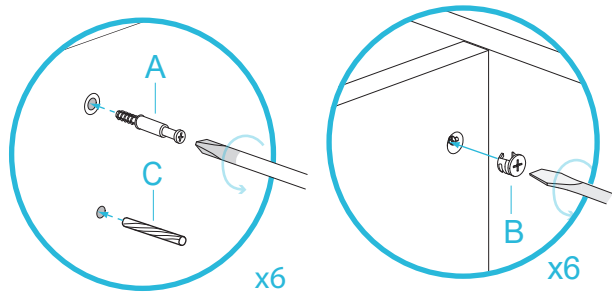
## Assembly Instructions

mocka

Thank you for your purchase.

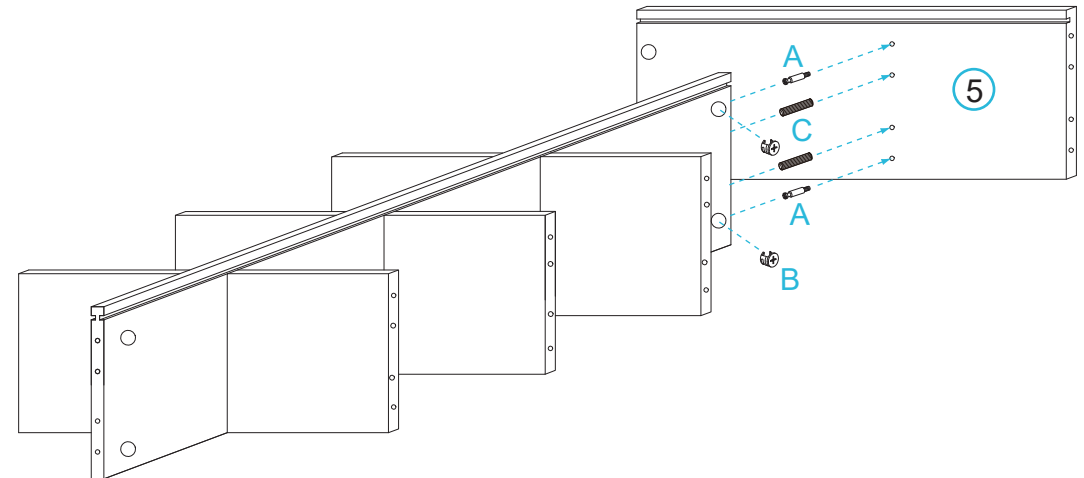
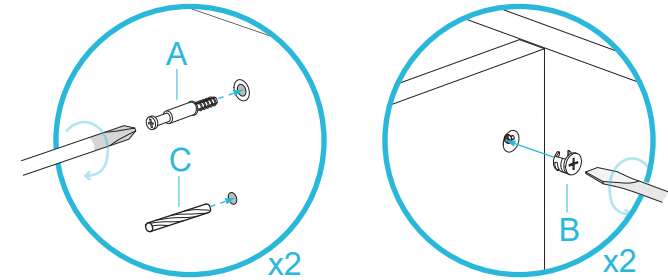
Please follow the instructions below for correct assembly.

3



Attach panel [3] into panel [4] and secure 6 x bolts (A) and 6 x dowel (C). Slot together with the rest of the structure as shown. Place 6x locking nuts (B) into holes in the panels and tighten with screwdriver.

4



Screw in 2x bolts (A) and insert 2x dowels (C) into holes in panel [5]. Slot together with the rest of the structure as shown. Place 2x locking nuts (B) into holes in the panels and tighten with screwdriver.

# Watson 8 Cube Storage Unit

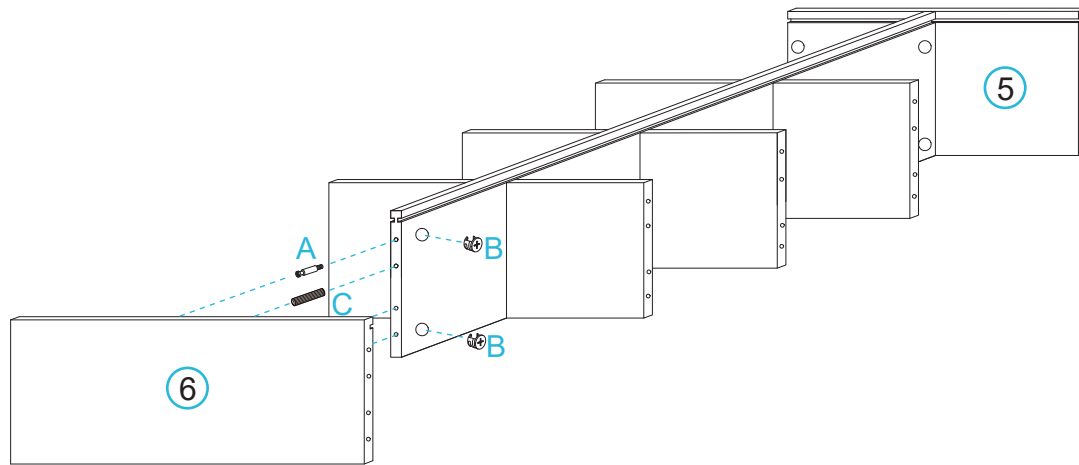
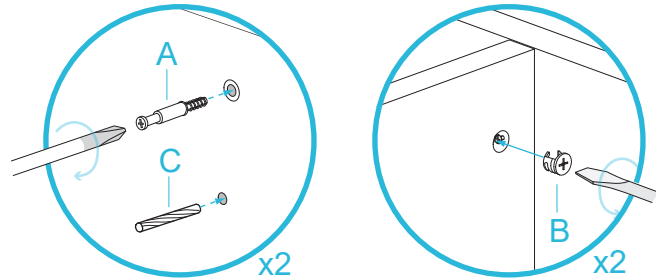
## Assembly Instructions

Thank you for your purchase.

Please follow the instructions below for correct assembly.

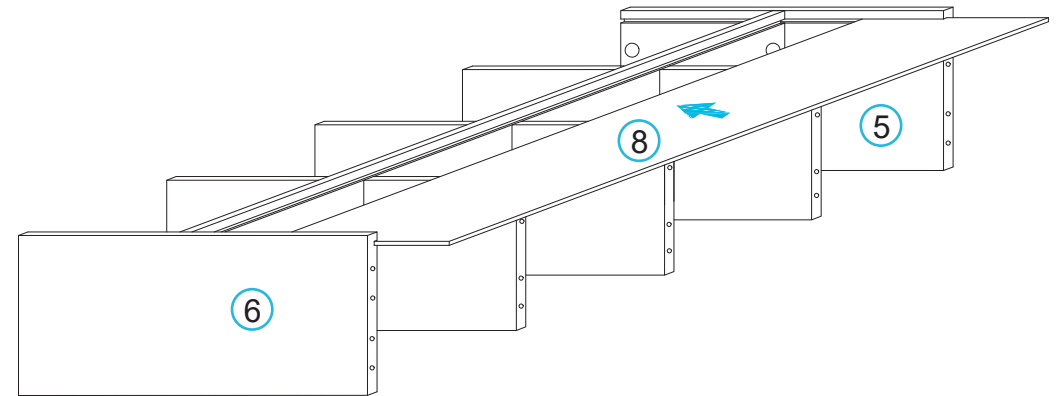
mocka

5



Screw in 2x bolts (A) and insert 2x dowels (C) into holes in panel [6]. Slot together with the rest of the structure as shown. Place 2x locking nuts (B) into holes in the panels and tighten with screwdriver.

6



Slide panel [8] between the grooves on panels [5] and [6] to form the back of the unit as shown.

# Watson 8 Cube Storage Unit

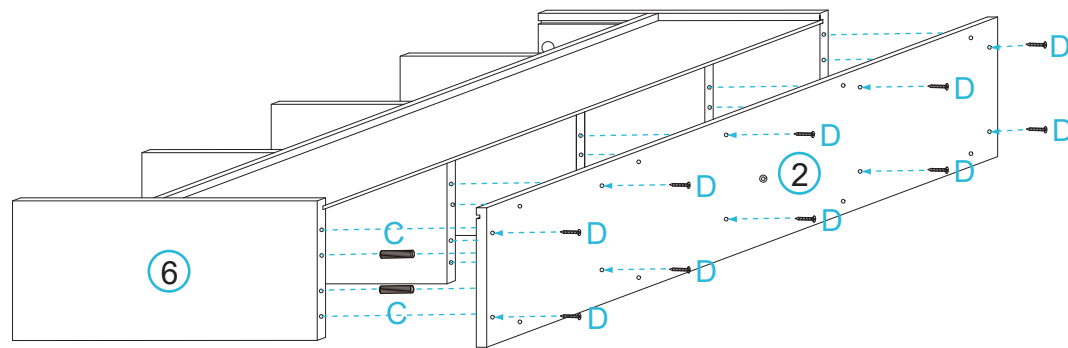
## Assembly Instructions

Thank you for your purchase.

Please follow the instructions below for correct assembly.

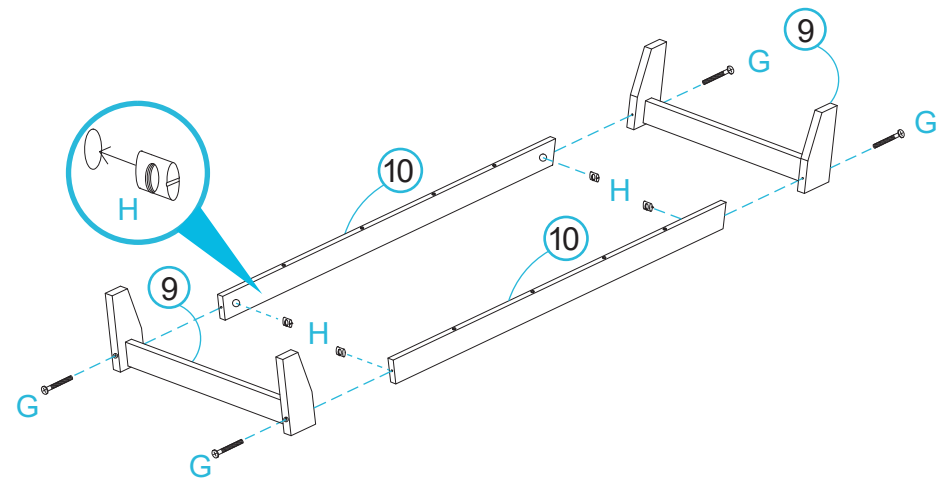
mocka

7



Insert 10 x dowels (C) into panel [2]. Attach panel [2] to panels [5], [6] and [2] and secure with 10 x long screws (D). Tighten with a screwdriver.

8



Insert 4 x nuts (H) into panel [10]. Attach panel [9] to panel [10] and secure with 4 x screws (G). Tighten with a screwdriver.

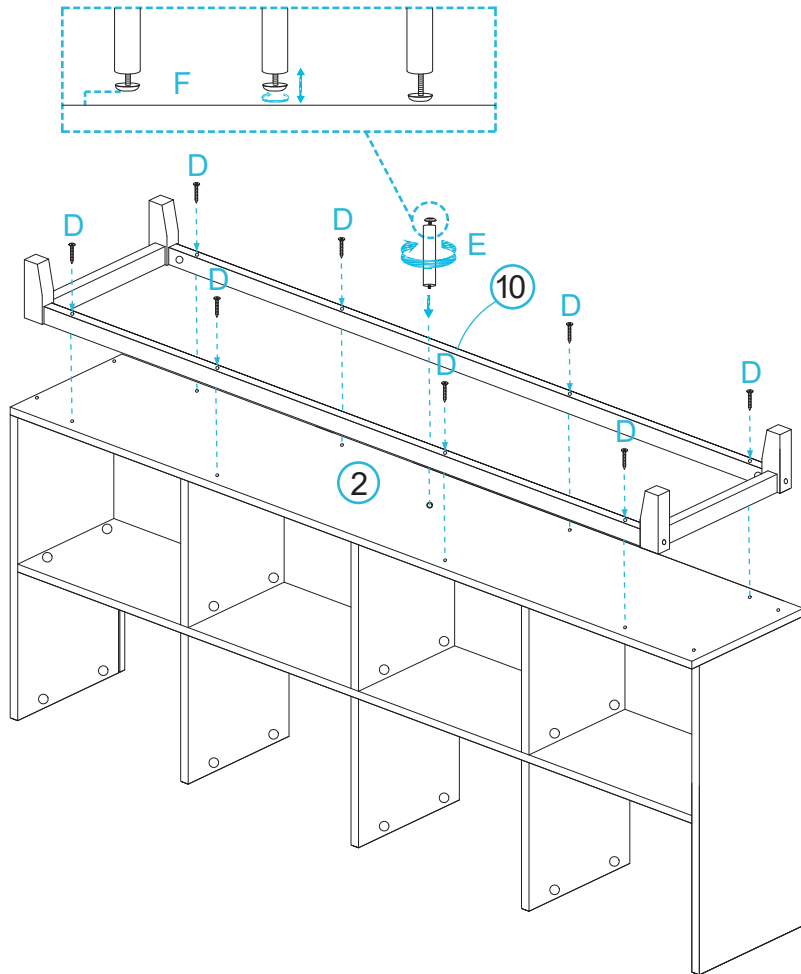
# Watson 8 Cube Storage Unit

## Assembly Instructions

mocka

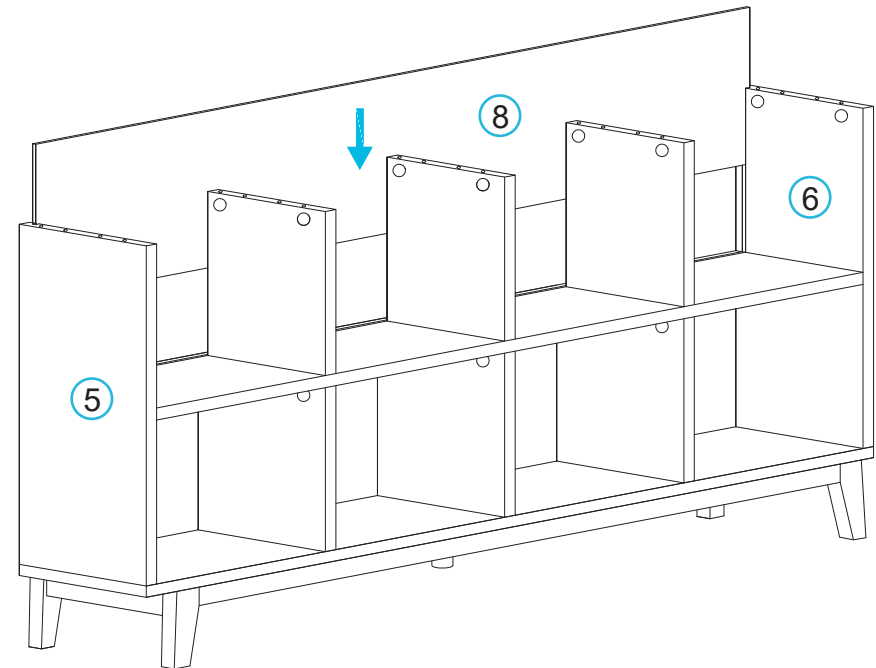
Thank you for your purchase.  
Please follow the instructions below for correct assembly.

9



Attach panel 10 to panel 2 with 8 long screws (D). Attach centre support leg (E) to panel 2. Attach screw (F) to centre support (E) as shown.

10



Flip unit over as shown slide panel [8] between the grooves on panels [5] and [6] to form the back of the unit as shown.

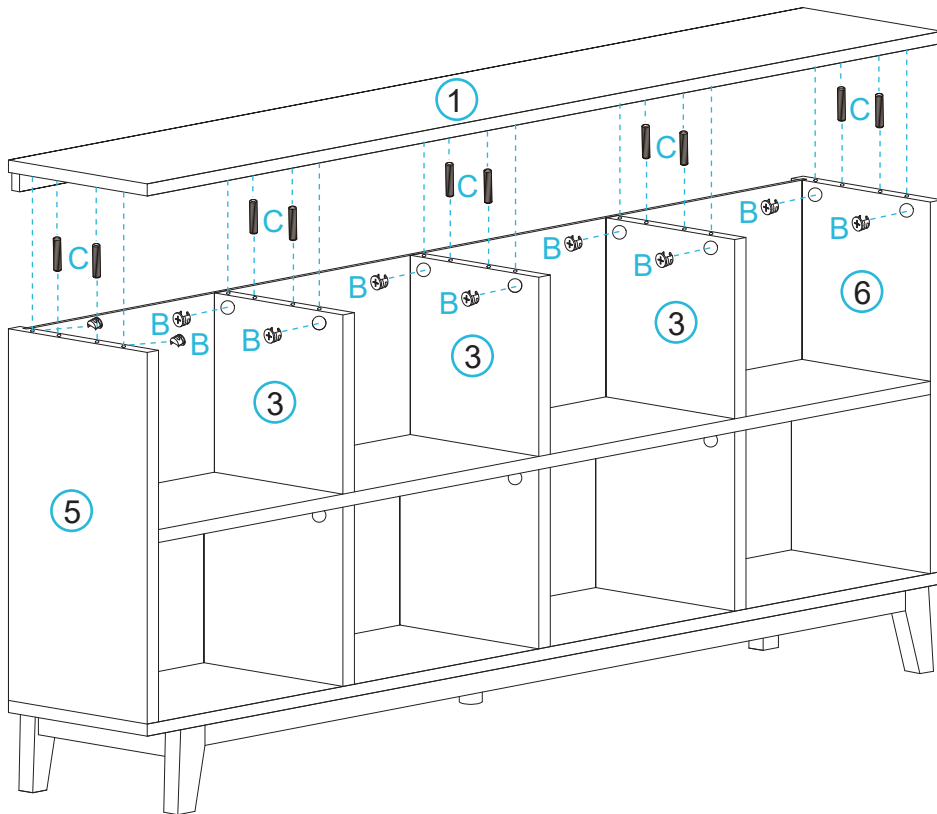
# Watson 8 Cube Storage Unit

## Assembly Instructions

Thank you for your purchase.  
Please follow the instructions below for correct assembly.

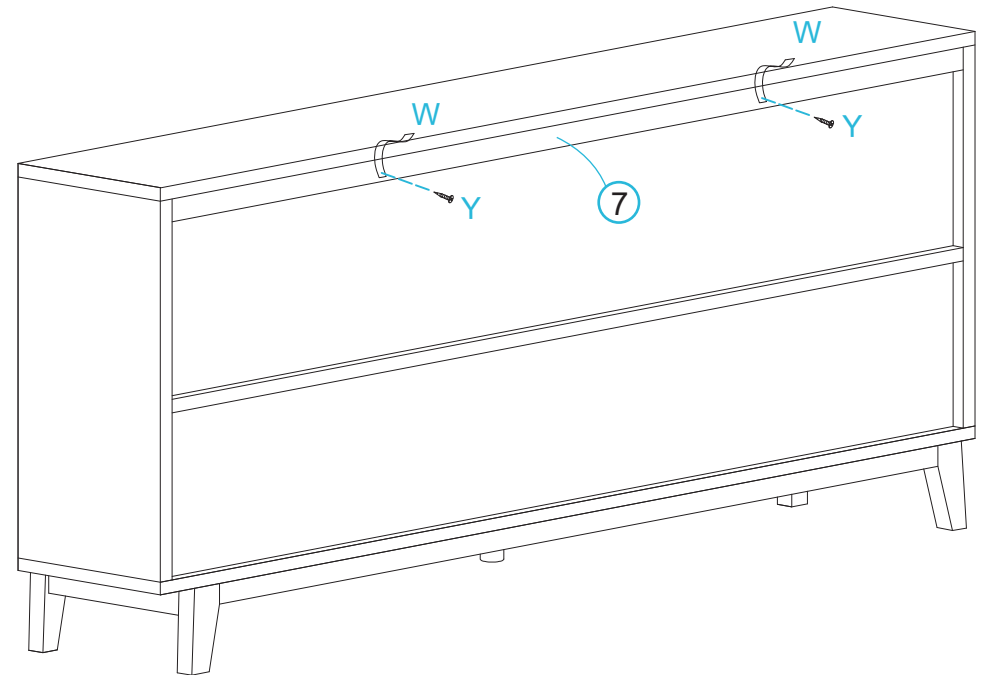
mocka

11



Fasten panel [1] to panels [5], [6] and [3] as shown and secure with 10 x dowel (C) and 10 x locking nut (B). Tighten with a screwdriver.

12



Attach 2 x wall strap (W) to panel [7] using 2 x screw (Y). Tighten with a screwdriver.

# Watson 8 Cube Storage Unit

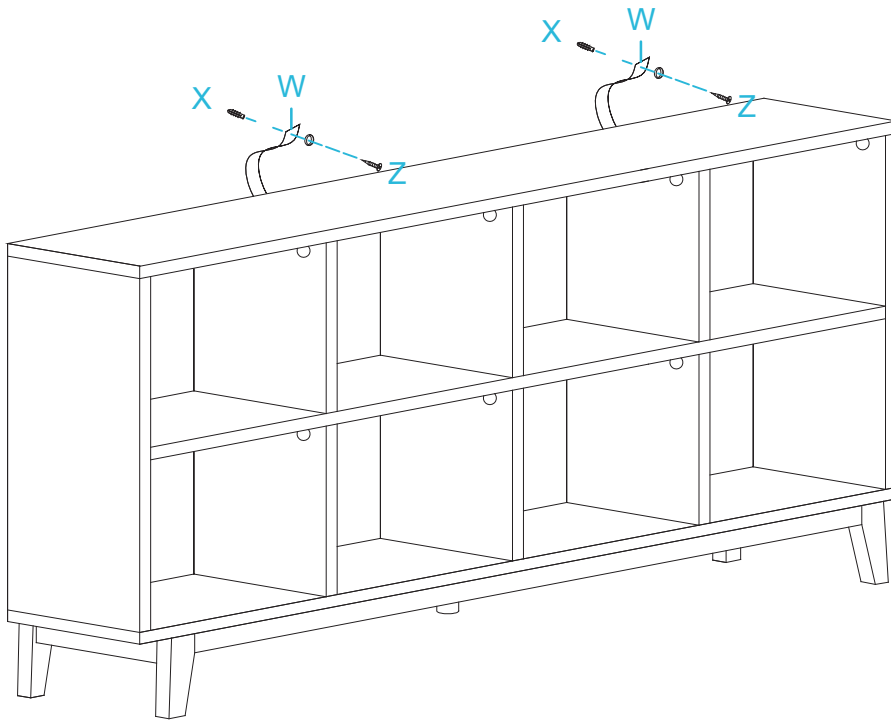
## Assembly Instructions

mocka

Thank you for your purchase.

Please follow the instructions below for correct assembly.

13



Move the unit into the desired location up against a wall, do not drag. Use a drill to create a small hole lining up with the top of the 2 x safety strap (W) and secure with 2 x wall anchor (X), 2 x washer (Z) and 2 x long screw. Tighten with a screwdriver. Ensure the unit is balanced and steady before use. You're done, enjoy!